

# SBAS Simulator v2

## System Volume Simulator

**SBAS Simulator** is a GNSS System Volume Simulator performing various analysis related to satellite navigation. It was developed by Iguassu Software Systems for ESA. The focus is to simulate of SBAS performance using customisable definition of GNSS constellations (real and imaginary), as well as to configure almost any parameter of each system and see resulting changes. SBAS Simulator screen has two main parts: the configuration and the analysis.

The configuration panel provides settings related to space, ground and user segments. Space segment is the satellite constellations. By default it is possible to select satellites from GEO, GPS, GLONASS and Galileo. Custom constellations are also supported. Satellite ephemerides are editable and user is also able to load ephemeris from common sources like RINEX, YUMA, TLE, etc. The simulator has multi-frequency support and can run either in single or dual frequency mode. Satellites' frequencies are configurable and independent. Ground segment reflects the network of RIMS stations (EGNOS, WAAS, Africa, etc.). Each RIMS contains various parameters including its position, different subtypes, masking conditions and availability settings. It is also possible to create custom RIMS and networks. The user segment specifies the simulation area and the step of the area grid. By default the area is the ECAC region, but it can be changed to any other area or to a simple point. All configuration parameters can be saved to configuration files which can be loaded later.

Analysis panel contains several simulation modules. SBAS related analyses are computed using the Minimum Operational Performance Standards for Global Positioning System (MOPS) or the Dual Fre- ...

### FEATURES HIGHLIGHT

**SBAS System Volume Simulator**

**Multi-constellation and multi-frequency support**

**Detailed configuration of ground segment**

**Dilution of Precision, Navigation System Errors**

**Protection Levels, Availability, Continuity**

**Ionospheric analyses**

**Depth of Coverage**

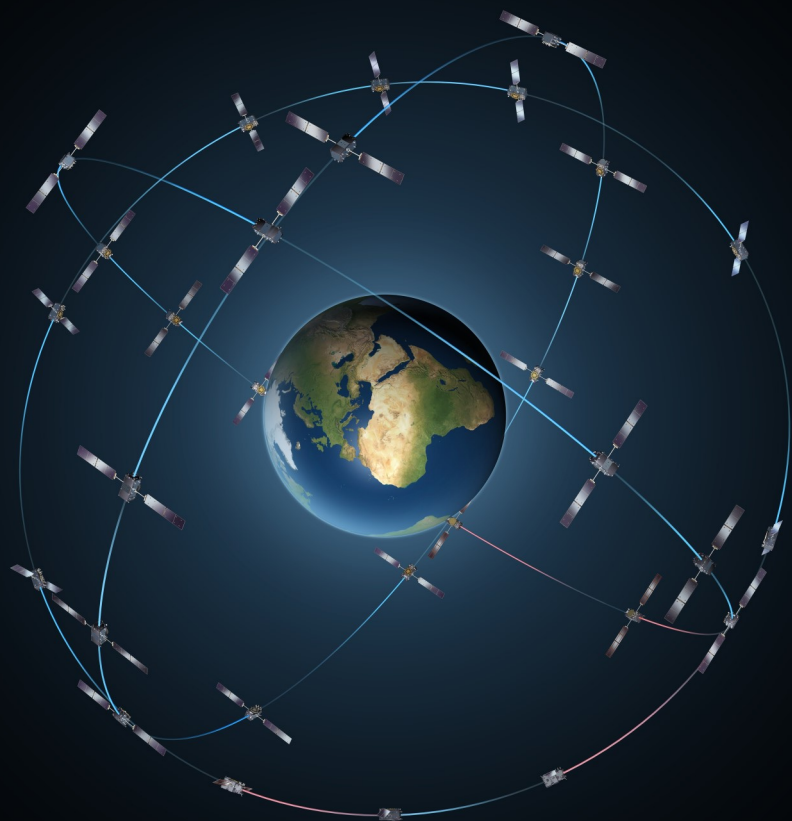
**Complex macro-model configuration**

**Detailed ionospheric model**

**Dynamic conditions**

**3D orbit animation**

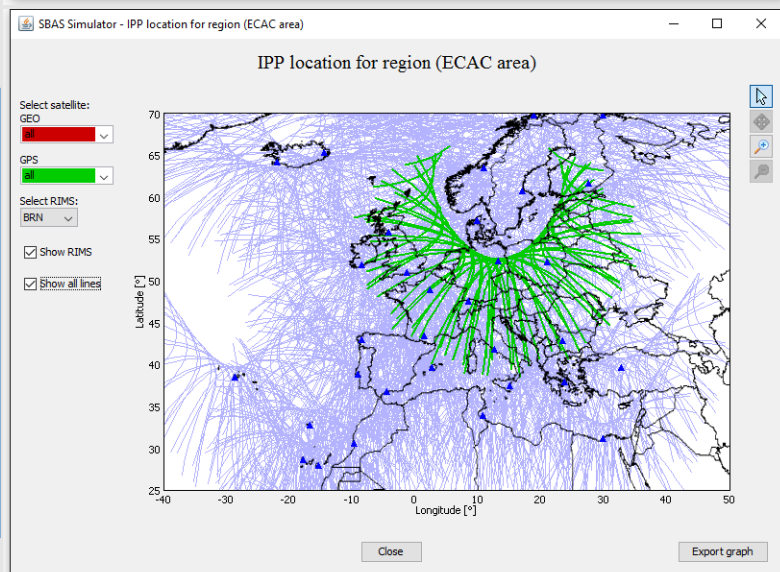
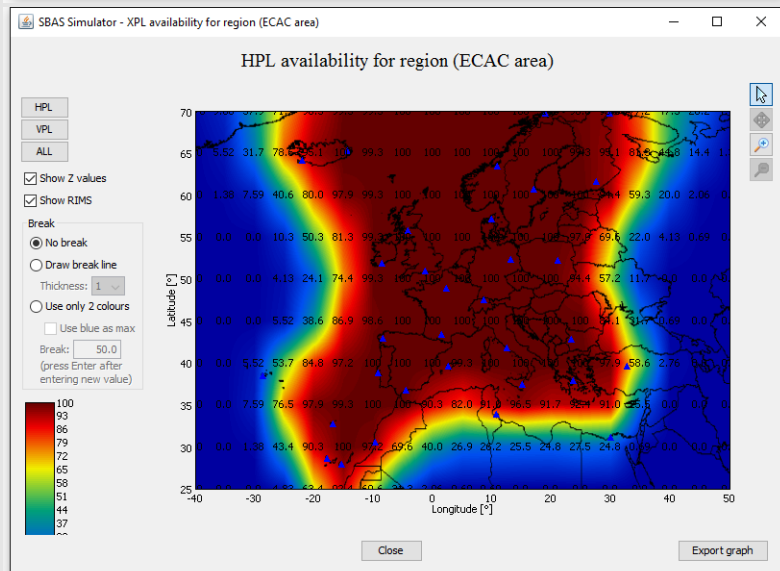
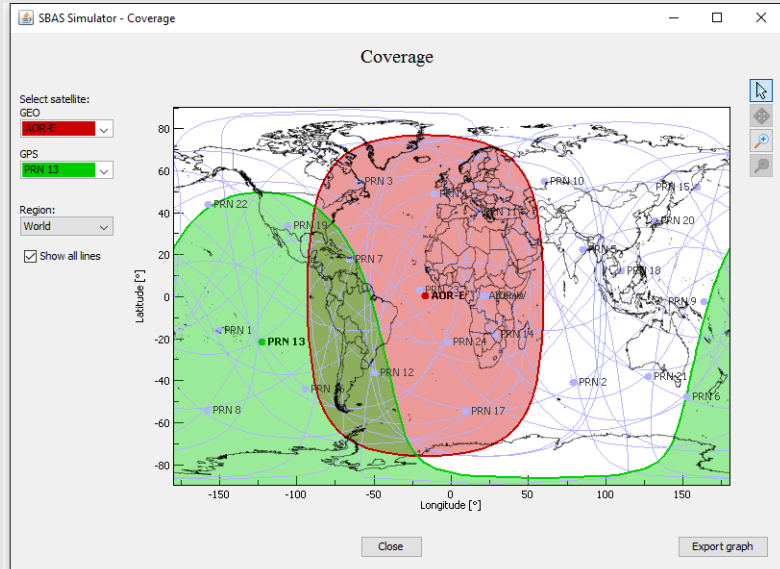
**Command-line simulations**



# SBAS Simulator v2

## System Volume Simulator

... quency Multi Constellation (DFMC) Standard. Geometry conditions are reflected in DOP analysis. Accuracy is modelled in NSE module which also supports the LPV200 service and stores the 95%ile for the previous 24 hours. Protection levels are computed through the XPL simulation. Availability is then calculated using results from XPL and NSE. Continuity analysis also uses results computed in XPL. Ionospheric analysis is quite complex: the task is to compute the Grid Ionospheric Vertical Error (GIVE) for each Ionospheric Grid Point (IGP). At first ionospheric pierce points (IPPs) from RIMS to satellites are determined taking into account the scintillation effects. For each IGP the spatial distribution of IPPs is calculated. IGP that do not pass through the filter are set to not monitored state. Variability of the ionosphere is modelled by a provided IONEX file. The degradation factor is calculated from the ionospheric variability and the spatial distribution. The GIVE is then computed from the degradation factor using configurable macro-model. Ionospheric results are inputs for the NSE, XPL, availability and continuity analysis. Simulator also provides plots for depth of coverage, satellite coverage over a region, ground tracks and sky plot. Simulations are performed in phases and results are stored into intermediate files in the scenario folder. With the same configuration the same file is never recomputed again which saves the simulation time for different analysis.



Please, use following link and credentials to access to a trial version at

<http://www.iguassu.cz/sbas-sim-2>

user: gnssjapan pass: simulator

Offer valid until end of August 2016



Phone: +420 2 35 35 1000  
E-mail: mailus@iguassu.cz  
www.iguassu.cz

Evropska 120  
Prague  
160 00